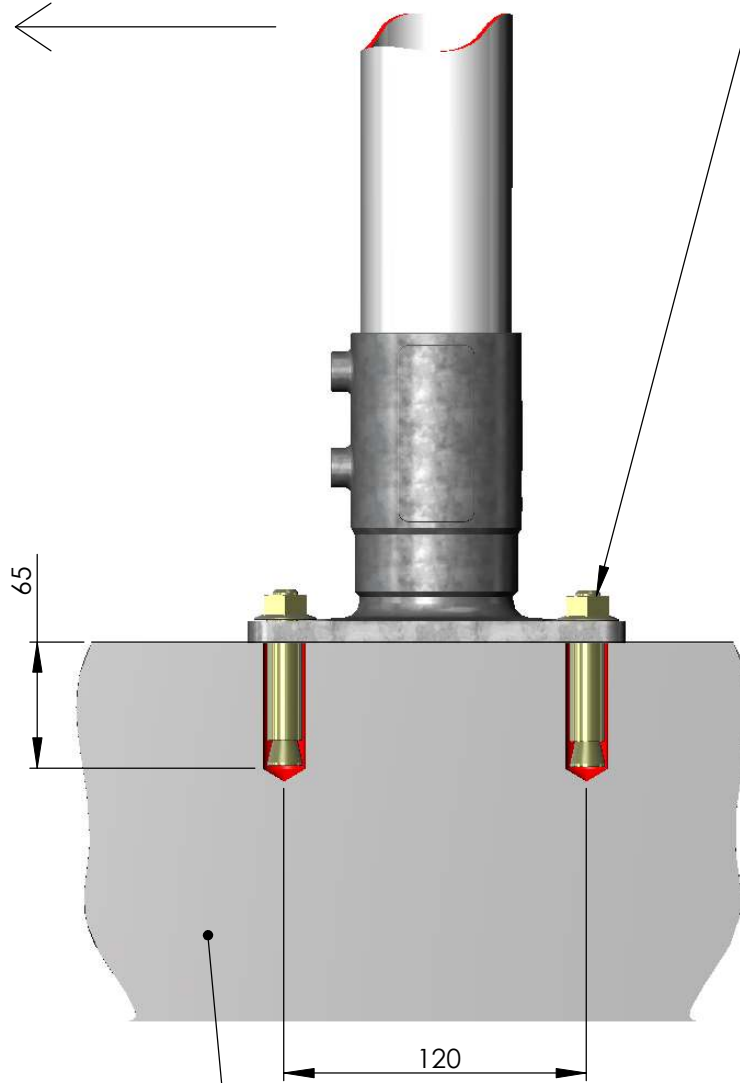


PREFERRED POST ORIENTATION
FOR DIRECTION OF TRAFFIC



EXISTING CONCRETE
(10MPa CONCRETE IF NEW INSTALLATION)

SURFACE MOUNT UNITS CAN BE BOLTED DOWN
USING JMB **SURFACE MOUNT INSTALLATION KIT.**
PRODUCT REF : MK203

THE INSTALLATION KIT CONTAINS 4 UNITS OF 16 x
65mm DYNA BOLT CEMENT ANCHORS

GUIDELINES FOR FITTING ANCHOR BOLTS:
(Manufacturers instruction and local regulations
should always take precedent over these
installation guidelines)

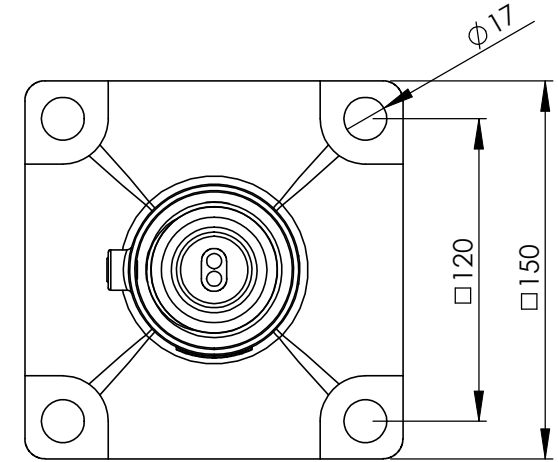
1. DRILL 4 x $\varnothing 16$ HOLES 65mm DEEP AT 120mm CENTRES
2. TIP: (Use the base unit as a drilling template)
3. CLEAN DUST OUT THE HOLES
4. POSITION THE BASE AND GENTLY TAP THE ANCHOR BOLTS THROUGH THE BASE HOLES USING A SOFT HAMMER
5. TIGHTEN THE NUTS IN A DIAGONAL PATTERN UNTILL ALL ARE FULLY TENSIONED

NOTE 1:

SIMILAR CAPACITY ANCHOR BOLTS THAT USE AN
M12 OR LARGER THREAD CAN BE SUBSTITUTED

NOTE 2:


IF CONCRETEING A NEW FOOTING, A FOOTING SIZE
OF 400mm X 400mm X 300mm DEEP USING 10MPa
IS ADVISED IF NO OVERRIDING LOCAL
REGULATIONS ARE APPLICABLE



PLAN OF HOLE PATTERN

INFORMATION APPLICABLE TO:
SURFACE MOUNT - SPRING RETURN SIGN POST UNITS
- BLUE SPRING
-BLACK SPRING

SCALE	NTS
CHECKED	ICB
LAST UPDATE	29/07/2011
DRAWN	Ian Brodie
DATE	04/05/2011

 ALL DIMENSIONS IN MILLIMETERS	QUANTITY	1	DO NOT SCALE IF IN DOUBT ASK
MATERIAL	NA		
FINISH	NA		
DESCRIPTION	SPRING RETURN SIGNPOSTS TECHNICAL INFORMATION SHEET 1 SURFACE MOUNT INSTALLATION INSTRUCTIONS		

JMB MANUFACTURING PTY LTD

24 BRIGID BOULEVARD
AUSTINE HEIGHTS
QLD AUSTRALIA 4300
PH. 07 3814 7882
FAX. 07 3814 7884



ACAD FILE NAME
Technical Information

SH. 1

Part:

OF 12

RECOMMENDED SOCKET TOP
5mm TO 25mm ABOVE GROUND

KEEP WEDGE TOP
BELOW PIVOT OF
SPRING RETURN SIGN POST

VIEW SHOWS PREFERRED POST ORIENTATION
RELATIVE TO ONCOMING TRAFFIC

SOCKET MOUNT BASE UNIT
RP100201
DP100201
CUT DOWN TO
200mm LONG

SOCKET CUP CUT AWAY
IN VIEWS FOR CLARITY

LOCKING WEDGE
PRODUCT REF: WE001

GROUND LEVEL

600mm FOR PRODUCT WIZ600
450mm FOR PRODUCT WIZ450

DETAIL C
SCALE 1 : 3

CUT OFF STUB LENGTH
200mm

SOCKET MOUNT SPRING RETURN SIGNPOSTS CAN BE INSTALLED WITH A DRIVABLE
GROUND SPIKE
PRODUCT REF : WIZ600, WIZ450 , WE001

WIZ600 SOCKETS SHOULD BE USED FOR SOFTER SOILS
WIZ450 SOCKET SHOULD BE USED WHERE SOIL IS TOO HARD TO DRIVE A 600mm SPIKE

GUIDELINES FOR INSTALLING:
(Local regulations should always take precedent over these installation guidelines)


1. DRIVE SPIKE INTO THE GROUND LEAVING A MINIMUM OF 5mm EXPOSED
2. WEDGE POSITION SHOULD BE 90° TO THE ROAD DIRECTION
3. CUT SOCKET MOUNT STUB 200mm BELOW THE PIVOT POINT OF BASE UNIT
4. INSERT BASE UNIT INTO THE SOCKET CUP
5. POSITION THE BASE AND DRIVE IN THE LOCKING WEDGE (WE001)
6. ENSURE WEDGE TOP IS BELOW THE SPRING RETURN SIGNPOST PIVOT LINE


GALVANISED
WIZARD SOCKET
GROUND SPIKE
PRODUCT REF: WIZ600
PRODUCT REF: WIZ450

SOIL

INFORMATION APPLICABLE TO:
SOCKET MOUNT - SPRING RETURN SIGNPOST UNITS
- BLUE SPRING
- BLACK SPRING

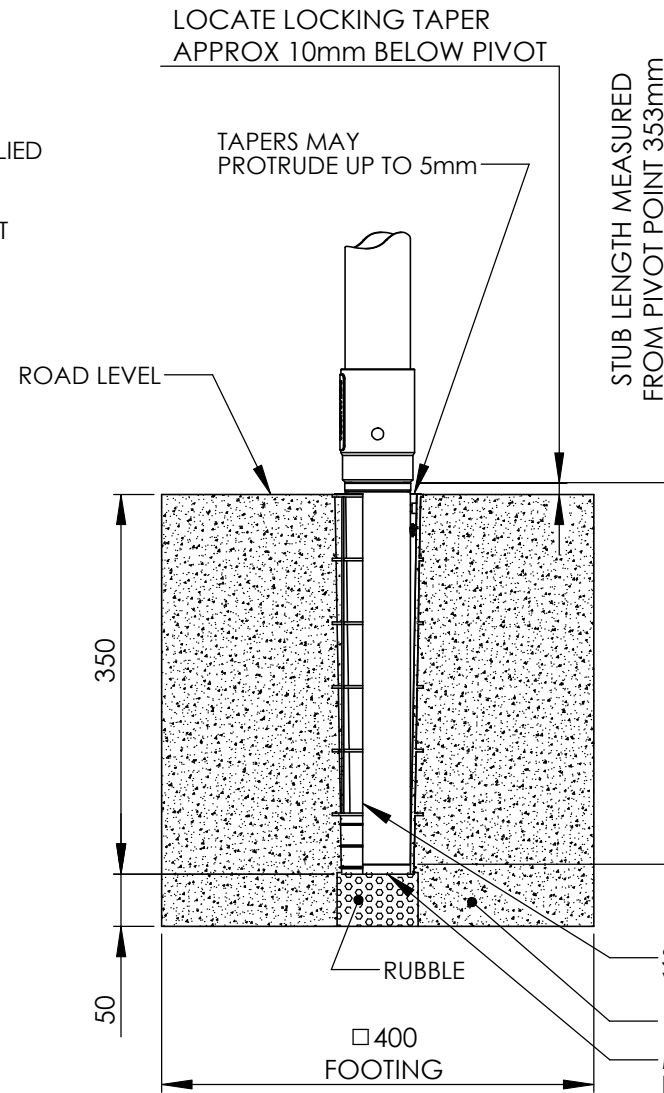
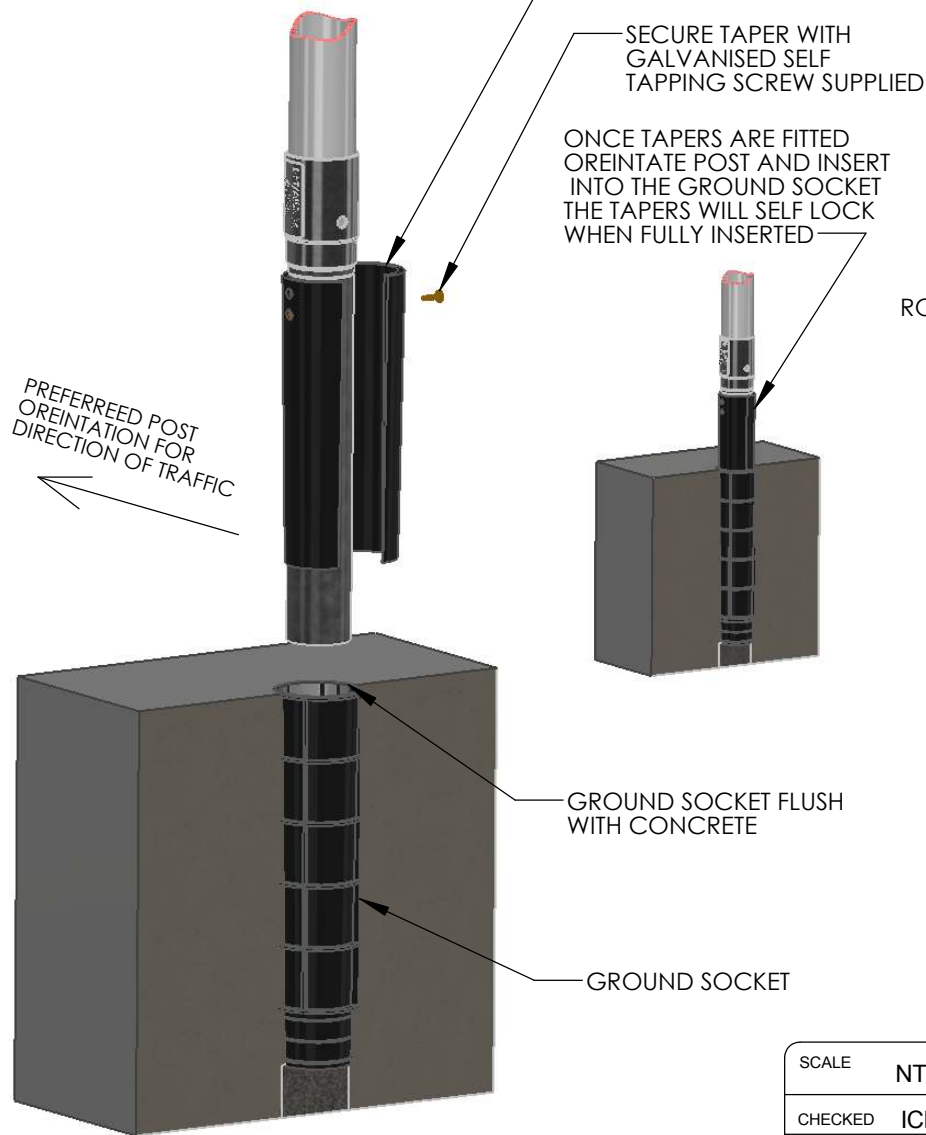
SCALE	NTS
CHECKED	ICB
LAST UPDATE	29/07/2011
DRAWN	Ian Brodie
DATE	04/05/2011

 ALL DIMENSIONS IN MILLIMETERS	QUANTITY	1	DO NOT SCALE IF IN DOUBT ASK
MATERIAL	NA		
FINISH	NA		
DESCRIPTION	SPRING RETURN SIGNPOSTS TECHNICAL INFORMATION SHEET 2 SOCKET MOUNT - WIZARD SOCKET INSTALLATION GUIDELINES		

JMB MANUFACTURING PTY LTD 24 BRIGID BOULEVARD AUSTINE HEIGHTS QLD AUSTRALIA 4300 PH. 07 3814 7882 FAX. 07 3814 7884		
ACAD FILE NAME Technical Information	SH.	2
Part:	OF	12

SMART TAPER LOCK KIT - PRODUCT REF: SU350

CONTAINS:
 2 X LOCKING TAPER
 2 X SELF DRILLING / TAPPING SCREWS
 1 X GROUND SOCKET



NOTES:
 ANY STANDARD 60OD POST as well as SPRING RETURN SIGNPOSTS can be used with smart taper lock

Cut socket mount stub 353mm below the pivot point

WHEN POST IS INSTALLED IN SOCKET
 A maximum of 5mm taper should remain protruding from the socket. This will provide 200kg of resistance against unauthorised removal. Our recommendation is to install with 0-1mm protruding

LOCKING TAPERS should be attached to the post at a distance equal to the GROUND SOCKET depth to ensure full locking engagement.

Do not fit post into ground socket until concrete is full cured

INSTALLING SOCKET:
 please refer to standard installation specifications produced by road authorities in your region as soil conditions and specifications may be different. This information is intended as a guide and any local authority specifications should will take precedence.

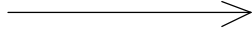
FOOTING:
 If installing a new footing we recommend a minimum of 400mm square by 450mm deep. allow at least 50mm beneath the ground socket.

**INFORMATION APPLICABLE TO:
 SOCKET MOUNT - SPRING RETURN SIGNPOST UNITS
 - BLUE SPRING
 -BLACK SPRING**

SCALE	NTS	ALL DIMENSIONS IN MILLIMETERS	QUANTITY	1	DO NOT SCALE IF IN DOUBT ASK
CHECKED	ICB	MATERIAL	NA		
LAST UPDATE	29/07/2011	FINISH	NA		
DRAWN	Ian Brodie	DESCRIPTION	SPRING RETURN SIGNPOSTS TECHNICAL INFORMATION SHEET 3 SOCKET MOUNT - SMART TAPER LOCK INSTALLATION GUIDELINES		
DATE	04/05/2011				

JMB MANUFACTURING PTY LTD		
24 BRIGID BOULEVARD AUSTINE HEIGHTS QLD AUSTRALIA 4300 PH. 07 3814 7882 FAX. 07 3814 7884		
ACAD FILE NAME	Technical Information	SH. 3
Part:		OF 12

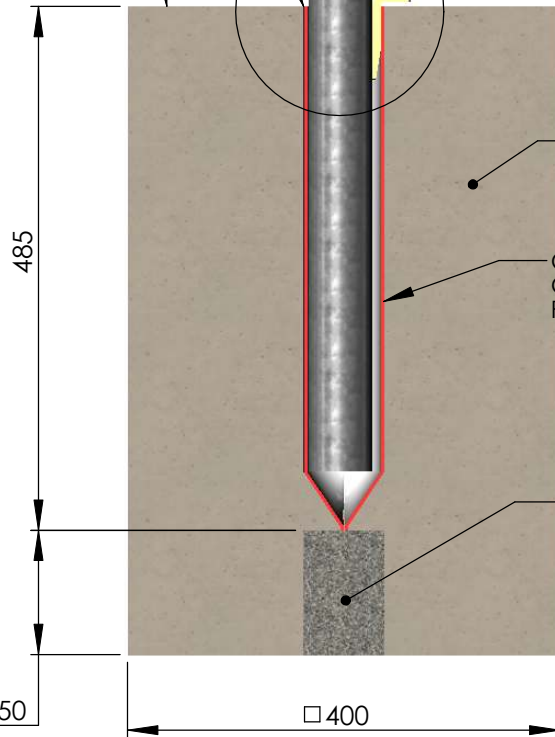
PREFERRED POST ORIENTATION FOR DIRECTION OF TRAFFIC



GROUND SLEEVE FLUSH WITH CONCRETE

TOP OF CONCRETE LEVEL

D

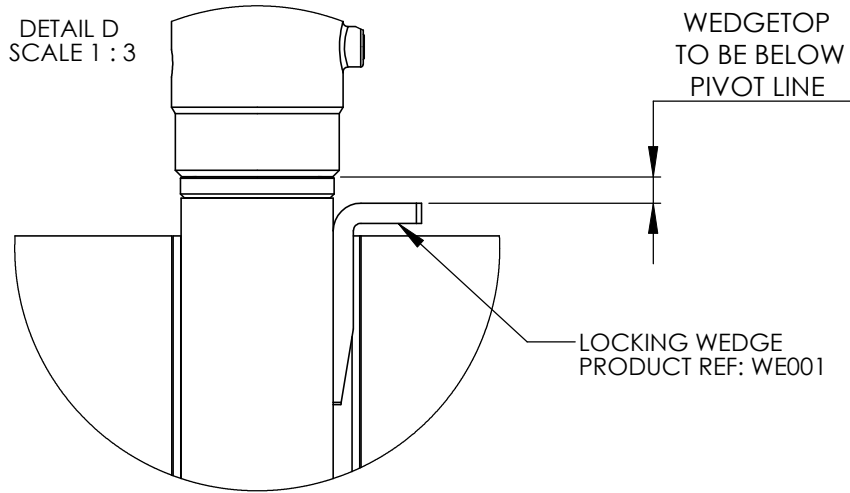


MIN 10MPa CONCRETE

GALVANISED GROUND SLEEVE PRODUCT REF: GS201

RUBBLE CAN BE PLACED HERE TO PROMOTE DRAINAGE

DETAIL D SCALE 1 : 3



WEDGETOP TO BE BELOW PIVOT LINE

LOCKING WEDGE PRODUCT REF: WE001

SOCKET MOUNT SPRING RETURN SIGNPOSTS CAN BE INSTALLED INTO AN EXISTING CONCRETED GROUND SLEEVE OF NEW CONCRETED GROUND SLEEVE. IT IS NOT RECOMMENDED TO DIRECTLY CONCRETE A SOCKET MOUNT SPRING RETURN BASE UNIT

FOR NEW INSTALLATION SITES WE RECOMMEND USING THE SMART TAPER LOCK SYSTEM. (REFER TECHNICAL INFORMATION SHEET 3)

GUIDELINES FOR INSTALLING INTO AN EXISTING SITE:
(Local regulations should always take precedent over these installation guidelines)

PRODUCT REF : WE001 WEDGE

1. MEASURE DEPTH OF GROUND SLEEVE
2. CUT SOCKET MOUNT STUB TO SUIT THE DEPTH
3. INSERT BASE UNIT INTO THE GROUND SLEEVE
4. POSITION THE BASE UNIT AND DRIVE IN THE LOCKING WEDGE (WE001)
5. ENSURE WEDGE TOP IS BELOW THE SPRING RETURN SIGNPOST PIVOT LINE

GUIDELINES FOR INSTALLING INTO A NEW SITE:
(Local regulations should always take precedent over these installation guidelines)

PRODUCT REF : WE001 WEDGE, GS201 GROUND SLEEVE

1. SET GROUND SLEEVE IN FOOTING
2. PLACE SOME RUBBLE IN CENTRE BASE TO FACILITATE DRAINAGE
3. CONCRETE GROUND SLEEVE IN PLACE USING MIN 10MPa CONCRETE
4. LEAVE TO SET BEFORE FITTING THE SPRING RETURN SIGN POST
5. DO NOT ATTEMPT TO DRIVE THE WEDGE IN PLACE UNTIL CONCRETE HAS COMPLETELY SET
6. REFER TO EXISTING SITE INSTRUCTIONS ABOVE TO INSTALL THE SPRING RETURN SIGN POST

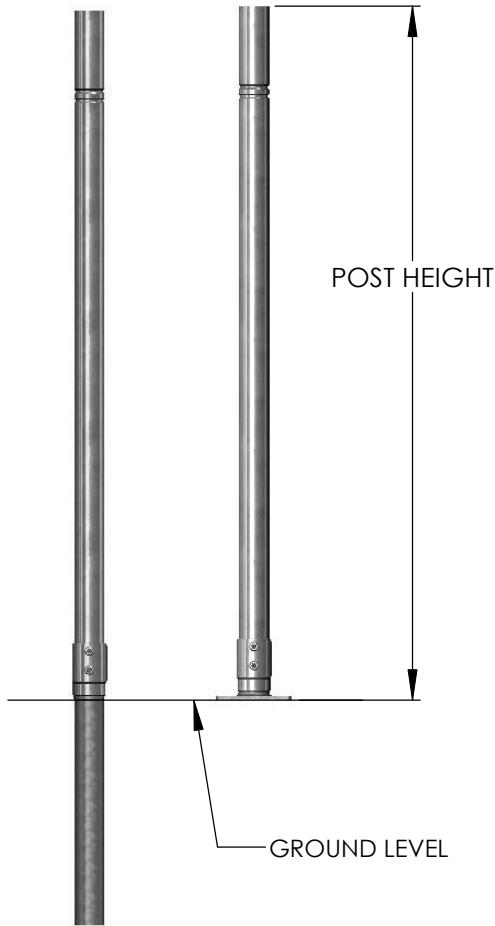
INFORMATION APPLICABLE TO:
SOCKET MOUNT - SPRING RETURN SIGNPOST UNITS
- BLUE SPRING
- BLACK SPRING

SCALE	NTS
CHECKED	ICB
LAST UPDATE	29/07/2011
DRAWN	Ian Brodie
DATE	04/05/2011

	ALL DIMENSIONS IN MILLIMETERS	QUANTITY	DO NOT SCALE IF IN DOUBT ASK
MATERIAL	NA		
FINISH	NA		
DESCRIPTION	SPRING RETURN SIGNPOSTS TECHNICAL INFORMATION SHEET 4 SOCKET MOUNT - GROUND SLEEVE INSTALLATION GUIDELINES		

JMB MANUFACTURING PTY LTD 24 BRIGID BOULEVARD AUSTINE HEIGHTS QLD AUSTRALIA 4300 PH. 07 3814 7882 FAX. 07 3814 7884		
ACAD FILE NAME	SH.	4
Technical Information	OF	12
Part:		

STANDARD STEEL POST PICTURED



BLUE SPRING TABLE NOTES:

- POST HEIGHT RANGE FOR SPRING RETURN SIGN POSTS - BLUE SPRING
- THE POST HEIGHT IN THE TABLE BELOW REFERS TO OVERALL HEIGHT (ie. GROUND LEVEL TO POST). THE ACTUAL PIPE LENGTH REQUIRED TO ACHIEVE A NOMINATED POST HEIGHT IS:
PIPE LENGTH = POST HEIGHT - 75mm
- SIGN CARRYING CAPACITY IN THE TABLE BELOW REFERS TO THE MAXIMUM MASS OF SIGNAGE THAT CAN FIT TO A SPRING RETURN SIGN POST & ALLOW IT TO STILL SELF RECOVER
- TYPICAL SIGN SIZE CAN BE USED AS AN APPROXIMATE SIGN SIZE GUIDE, BASED ON 1.6mm ALUMINIUM PLATE

STEEL POSTS: ϕ 60.3mmOD x 2.3mm WALL				
	POST HEIGHT mm	PIPE LENGTH mm	SIGN CARRYING CAPACITY kg	TYPICAL ALUMINIUM SIGN SIZE mm
MAXIMUM POST HEIGHT	1600	1525	1.15	600 h x 450 w
STANDARD HEIGHT	1400	1325	2.3	2 x SIGNS 600h x 450w
MINIMUM HEIGHT	1000	925	6	-
CUSTOM APPLICATION FOR PARKING CONTROL SIGNS - PLASTIC POST: ϕ 60.3mmOD x 3.5mm WALL				
MAXIMUM HEIGHT	2800	2725	0.45	450h X 225w

FOR CUSTOM APPLICATIONS OR PRODUCT SELECTION ASSISTANCE
SIMPLY CONTACT JMB AND WE WILL HELP FIND A SOLUTION

ALTERNATLEY: TRY THE SIMPLE SPRING RETURN SIGN POST SELECTOR PROGRAM (on
the downloads page) TO HELP SELECT THE CORRECT COLOURED SPRING FOR YOUR
APPLICATION



FOR STEEL POST LOCKING SCREWS USE
M10 X 12 KNURL OR CUP GRUB SCREWS



FOR PLASTIC POST LOCKING SCREWS USE
M10 X 16 POINT GRUB SCREWS

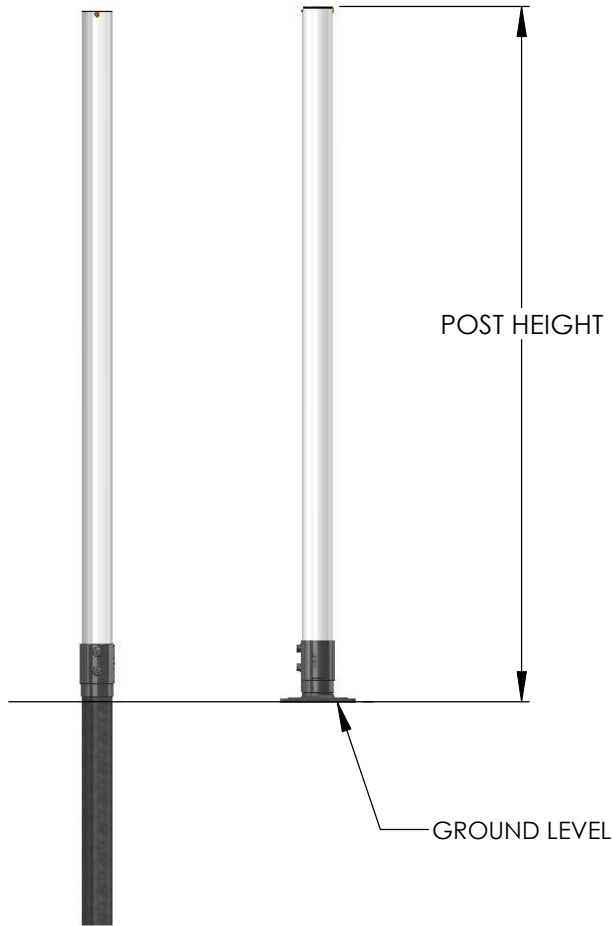
SCALE	NTS
CHECKED	ICB
LAST UPDATE	29/07/2011
DRAWN	Ian Brodie
DATE	07/05/2011

ALL DIMENSIONS IN MILLIMETERS	QUANTITY	DO NOT SCALE IF IN DOUBT ASK
MATERIAL		
FINISH NA		
DESCRIPTION SPRING RETURN SIGNPOSTS TECHNICAL INFORMATION SHEET 5 BLUE SPRING BASE APPLICABLE POST HEIGHT RANGE		

JMB MANUFACTURING PTY LTD 24 BRIGID BOULEVARD AUSTINE HEIGHTS QLD AUSTRALIA 4300 PH. 07 3814 7882 FAX. 07 3814 7884		
ACAD FILE NAME Technical Information	SH. 5	
Part:	OF 12	

WARNING: Spring Return Signposts do contain a spring under pressure and should be fitted with A Safe Post. PLEASE REFER TO OUR SAFE POST SAFETY SHEET (download pages) for details on making safe posts.

STANDARD PLASTIC POST PICTURED



BLACK SPRING TABLE NOTES:

- POST HEIGHT RANGE FOR SPRING RETURN SIGN POSTS - BLUE SPRING
- THE POST HEIGHT IN THE TABLE BELOW REFERS TO OVERALL HEIGHT (ie. GROUND LEVEL TO POST). THE ACTUAL PIPE LENGTH REQUIRED TO ACHIEVE A NOMINATED POST HEIGHT IS:
PIPE LENGTH = POST HEIGHT - 75mm
- SIGN CARRYING CAPACITY IN THE TABLE BELOW REFERS TO THE MAXIMUM MASS OF SIGNAGE THAT CAN FITTED TO A SPRING RETURN SIGN POST & ALLOW IT TO STILL SELF RECOVER
- TYPICAL SIGN SIZE CAN BE USED AS AN APPROXIMATE SIGN SIZE GUIDE, BASED ON 1.6mm ALUMINIUM PLATE

PLASTIC POST: ϕ 60.3mOD x 3.5mm WALL				
	POST HEIGHT mm	PIPE LENGTH mm	SIGN CARRYING CAPACITY kg	TYPICAL ALUMINIUM SIGN SIZE mm
MAXIMUM POST HEIGHT	1600	1525	1.15	600 h x 450 w
STANDARD HEIGHT	1400	1325	2.3	2 x SIGNS 600h x 450w
MINIMUM HEIGHT	800	725	6	-
STEEL POST: ϕ 60.3mOD x 2.3mm WALL				
MAXIMUM POST HEIGHT	1150	1075	1.15	600 h x 450 w
CUSTOM APPLICATION MINING DELINEATOR - PLASTIC POST: ϕ 60.3mOD x 3.5mm WALL				
CUSTOM HEIGHT	2750	2675	0	DELINEATOR ONLY

FOR CUSTOM APPLICATIONS OR PRODUCT SELECTION ASSISTANCE
SIMPLY CONTACT JMB AND WE WILL HELP FIND A SOLUTION

ALTERNATLEY: TRY THE SIMPLE SPRING RETURN SIGN POST SELECTOR PROGRAM (on the downloads page) TO HELP SELECT THE CORRECT COLOURED SPRING BASE UNIT FOR YOUR APPLICATION



FOR STEEL POST LOCKING SCREWS USE
M10 X 12 KNURL OR CUP GRUB SCREWS



FOR PLASTIC POST LOCKING SCREWS USE
M10 X 16 POINT GRUB SCREWS

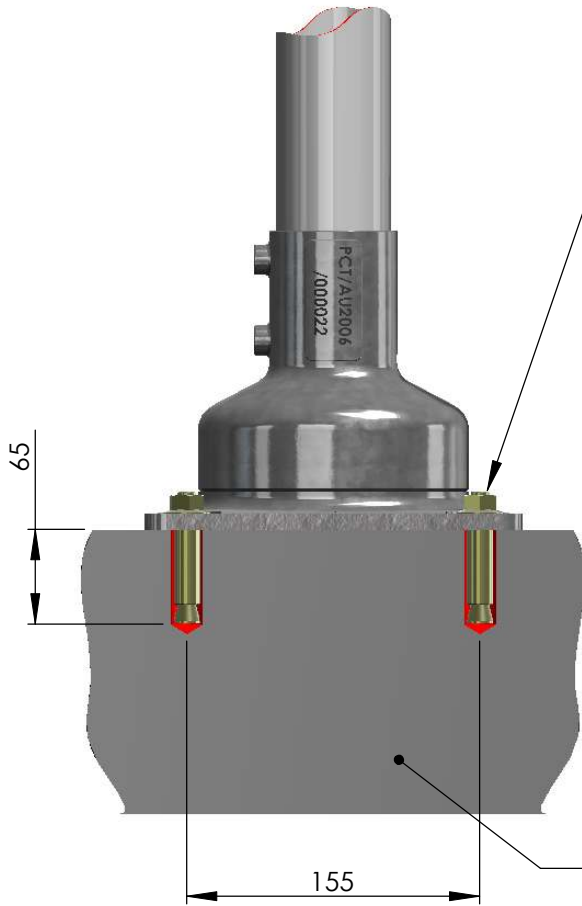
WARNING: Spring Return Signposts do contain a spring under pressure and should be fitted with A Safe Post. PLEASE REFER TO OUR SAFE POST SAFETY SHEET (download pages) for details on making safe posts.

SCALE	NTS
CHECKED	ICB
LAST UPDATE	29/07/2011
DRAWN	Ian Brodie
DATE	07/05/2011

ALL DIMENSIONS IN MILLIMETERS	QUANTITY	DO NOT SCALE IF IN DOUBT ASK
MATERIAL		
FINISH NA		
DESCRIPTION SPRING RETURN SIGNPOSTS TECHNICAL INFORMATION SHEET 6 BLACK SPRING BASE APPLICABLE POST HEIGHT RANGE		

JMB MANUFACTURING PTY LTD 24 BRIGID BOULEVARD AUSTINE HEIGHTS QLD AUSTRALIA 4300 PH. 07 3814 7882 FAX. 07 3814 7884		
ACAD FILE NAME Technical Information	SH. 6	
Part:	OF 12	

PREFERRED POST ORIENTATION FOR DIRECTION OF TRAFFIC



SURFACE MOUNT UNITS CAN BE BOLTED DOWN USING JMB **SURFACE MOUNT INSTALLATION KIT. PRODUCT REF : MK203**

THE INSTALLATION KIT CONTAINS 4 UNITS OF 16 x 65mm DYNA BOLT CEMENT ANCHORS

GUIDELINES FOR FITTING ANCHOR BOLTS:
(Manufacturers instruction and local regulations should always take precedent over these installation guidelines)

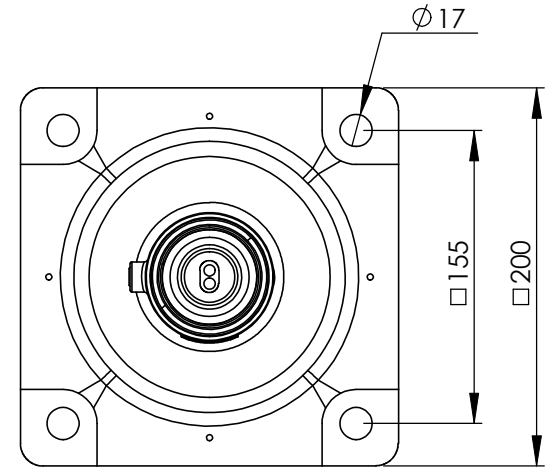
1. DRILL 4 x $\varnothing 16$ HOLES 65mm DEEP AT 120mm CENTRES
2. TIP: (Use the base unit as a drilling template)
3. CLEAN DUST OUT THE HOLES
4. POSITION THE BASE AND GENTLY TAP THE ANCHOR BOLTS THROUGH THE BASE HOLES USING A SOFT HAMMER
5. TIGHTEN THE NUTS IN A DIAGONAL PATTERN UNTILL ALL ARE FULLY TENSIONED

NOTE 1:

SIMILAR CAPACITY ANCHOR BOLTS THAT USE AN M12 OR LARGER THREAD CAN BE SUBSTITUTED

NOTE 2:

IF CONCRETEING A NEW FOOTING, A FOOTING SIZE OF 400mm X 400mm X 400mm DEEP USING 10MPa IS ADVISED IF NO OVERRIDING LOCAL REGULATIONS ARE APPLICABLE



PLAN OF HOLE PATTERN

EXISTING CONCRETE (10MPa CONCRETE IF NEW INSTALLATION)

**INFORMATION APPLICABLE TO:
SURFACE MOUNT - SPRING RETURN SIGN POST UNIT
- RED SPRING**

SCALE	NTS
CHECKED	ICB
LAST UPDATE	29/07/2011
DRAWN	Ian Brodie
DATE	06/05/2011

	ALL DIMENSIONS IN MILLIMETERS	QUANTITY	1	DO NOT SCALE IF IN DOUBT ASK
MATERIAL		NA		
FINISH		NA		
DESCRIPTION		TALL SPRING RETURN SIGNPOSTS TECHNICAL INFORMATION SHEET 7 SURFACE MOUNT INSTALLATION INSTRUCTIONS		

JMB MANUFACTURING PTY LTD 24 BRIGID BOULEVARD AUSTINE HEIGHTS QLD AUSTRALIA 4300 PH. 07 3814 7882 FAX. 07 3814 7884		
ACAD FILE NAME	Technical Information	SH. 7
Part:		OF 12

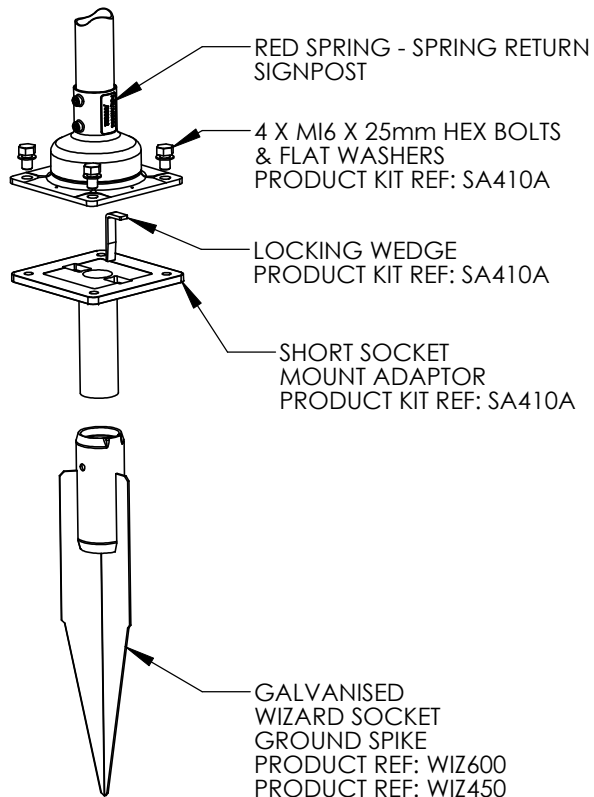
SOCKET MOUNT ADAPTOR KIT - PRODUCT REF: SA410A

CONTAINS:

- 4 X M16 x 25 HEX BOLTS (Galv)
- 4 X M16 FLAT WASHERS Galv)
- 1 X WE001 LOCKING WEDGE
- 1 X SA410 SHORT SOCKET MOUNT ADAPTOR

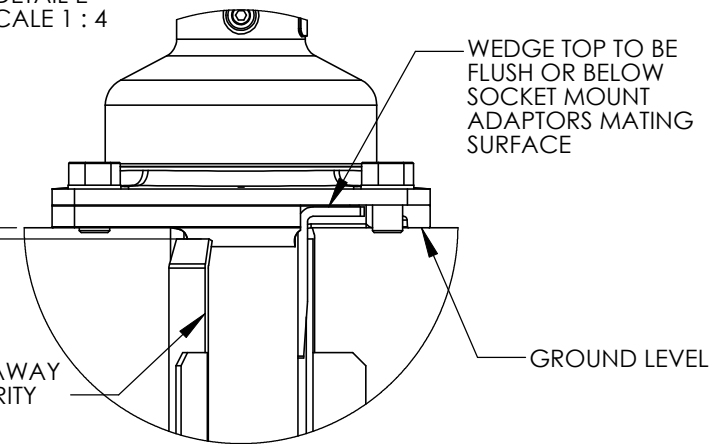
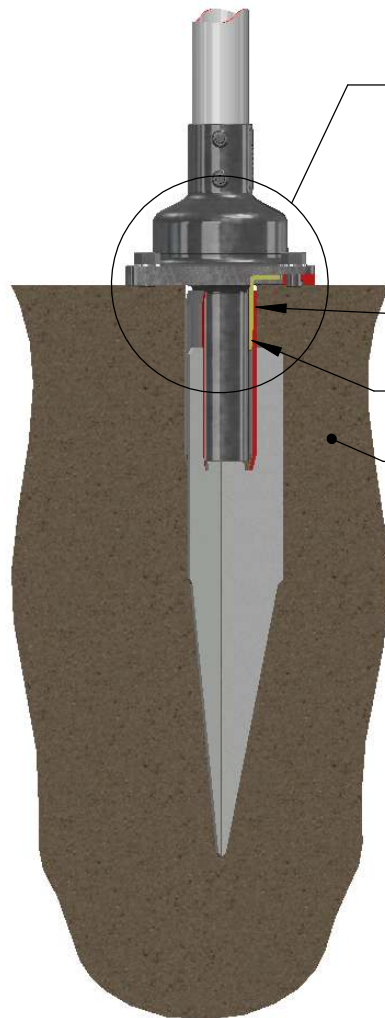
EXPLODED VIEW OF THE GROUND SPIKE INSTALLATION COMPONENTS

PREFERRED POST ORIENTATION FOR DIRECTION OF TRAFFIC



RECOMMENDED SOCKET TOP
5mm TO 10mm BELOW GROUND

DETAIL E
SCALE 1 : 4



SURFACE MOUNT SPRING RETURN SIGNPOSTS - RED SPRING - CAN BE INSTALLED WITH A DRIVABLE GROUND SPIKE USING A SOCKET MOUNT ADAPTOR KIT

PRODUCT REF : WIZ600, WIZ450 , SA410A

WIZ600 SOCKETS SHOULD BE USED FOR SOFTER SOILS
WIZ450 SOCKET SHOULD BE USED WHERE SOIL IS TOO HARD TO DRIVE A 600mm SPIKE

GUIDELINES FOR INSTALLING:
(Local regulations should always take precedent over these installation guidelines)

1. DRIVE SPIKE INTO THE GROUND LEAVING A MINIMUM OF 5mm EXPOSED
2. INSERT SOCKET MOUNT ADAPTOR IN THE CORRECT ORIENTATION INTO THE GROUND SPIKE CUP AND LOCK IN POSITION USING THE LOCK WEDGE.
3. WEDGE TOP SURFACE MUST BE FLUSH OR BELOW THE MATING FACE OF THE SOCKET MOUNT ADAPTOR
4. POSITION SPRING RETURN SIGNPOST ON THE SOCKET MOUNT ADAPTOR AND FIT THE 4 x M16 BOLTS AND FLAT WASHERS
5. TIGHTEN IN A DIAGONAL PATTERN

SCALE	NTS
CHECKED	ICB
LAST UPDATE	29/07/2011
DRAWN	Ian Brodie
DATE	06/05/2011

	ALL DIMENSIONS IN MILLIMETERS	QUANTITY	1	DO NOT SCALE IF IN DOUBT ASK
MATERIAL		NA		
FINISH		NA		
DESCRIPTION				
TALL SPRING RETURN SIGNPOSTS TECHNICAL INFORMATION SHEET 8 SOCKET MOUNT ADAPTOR - WIZARD SOCKET INSTALLATION GUIDELINES				

JMB MANUFACTURING PTY LTD		
24 BRIGID BOULEVARD AUSTINE HEIGHTS QLD AUSTRALIA 4300 PH. 07 3814 7882 FAX. 07 3814 7884		
ACAD FILE NAME	SH. 8	
Technical Information		
Part:	OF 12	

**INFORMATION APPLICABLE TO:
SURFACE MOUNT - SPRING RETURN SIGN POST UNIT
- RED SPRING**

SMART TAPER LOCK KIT - PRODUCT REF: SU350

- CONTAINS:
 2 X LOCKING TAPER
 2 X SELF DRILLING / TAPPING SCREWS
 1 X GROUND SOCKET

SOCKET MOUNT ADAPTOR KIT - PRODUCT REF: SA412A (FOR USE WITH SU350)

- CONTAINS:
 4 X M16 x 25 HEX BOLTS (Galv)
 4 X M16 FLAT WASHERS Galv)
 1 X SA412 350mm SOCKET MOUNT ADAPTOR

NOTES:
 ANY STANDARD 600D POST as well as SPRING RETURN SIGNPOSTS can be used with smart taper lock

Fit tapers to Socket Mount Adaptor and bolt the Spring Return Signpost onto the Socket mount adaptor.

Position the assembly in the correct orientation and insert the whole assembled unit into the ground socket

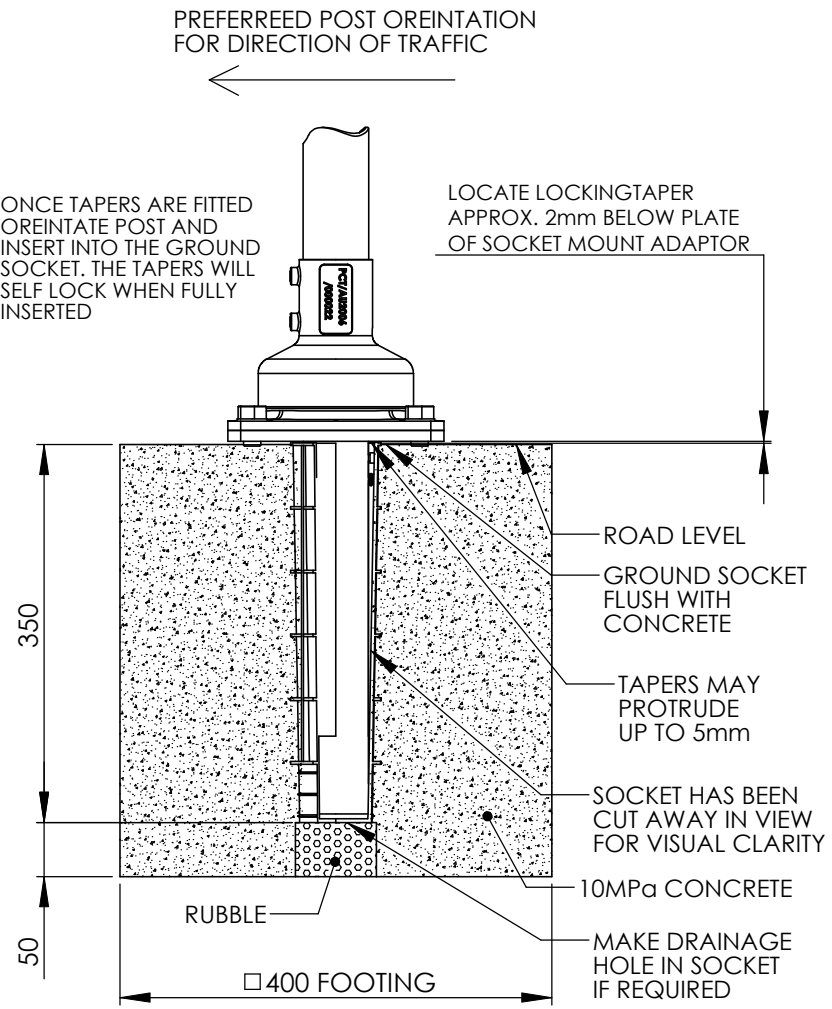
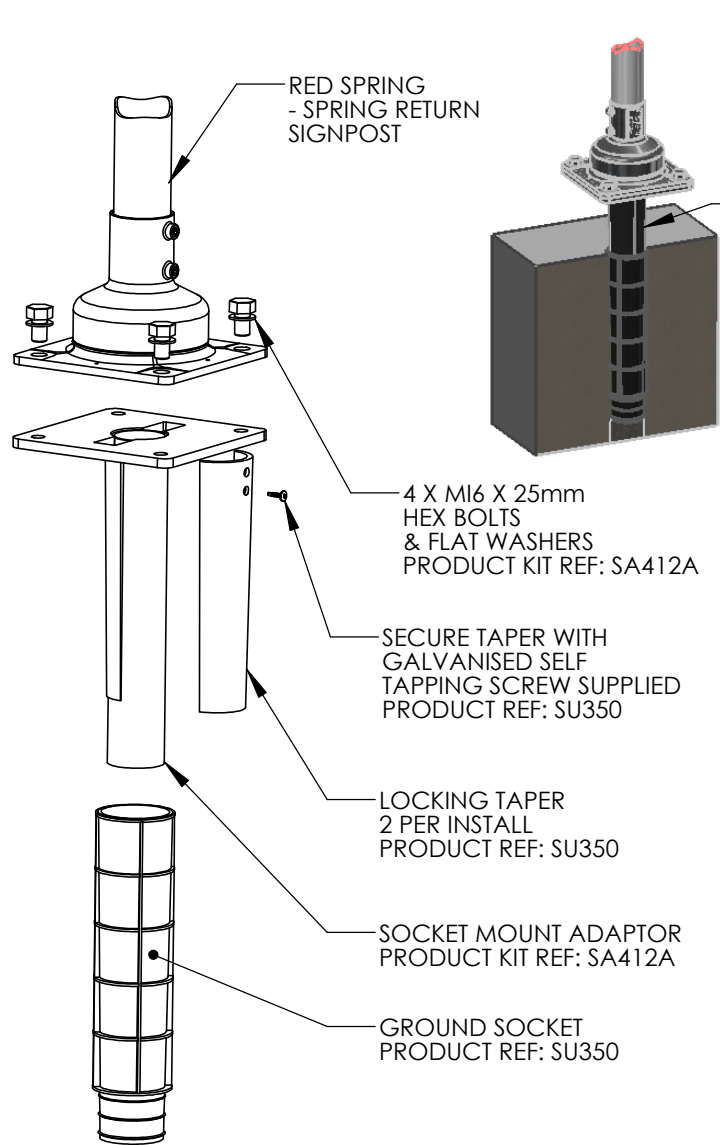
WHEN POST IS INSTALLED IN SOCKET A maximum of 5mm taper should remain protruding from the socket. This will provide 200kg of resistance against unauthorised removal. Our recommendation is to install with 0-1mm protruding

LOCKING TAPERS should be attached to the socket mount adaptor at a distance equal to the GROUND SOCKET depth to ensure full locking engagement.

Do not fit the assembly into ground socket until concrete is full cured

INSTALLING SOCKET: please refer to standard installation specifications produced by road authorities in your region as soil conditions and specifications may be different. This information is intended as a guide and any local authority specifications should will take precedence.

FOOTING:
 If installing a new footing we recommend a minimum of 400mm square by 450mm deep. allow at least 50mm beneath the ground socket.



**INFORMATION APPLICABLE TO:
 SURFACE MOUNT - SPRING RETURN SIGN POST UNIT
 - RED SPRING**

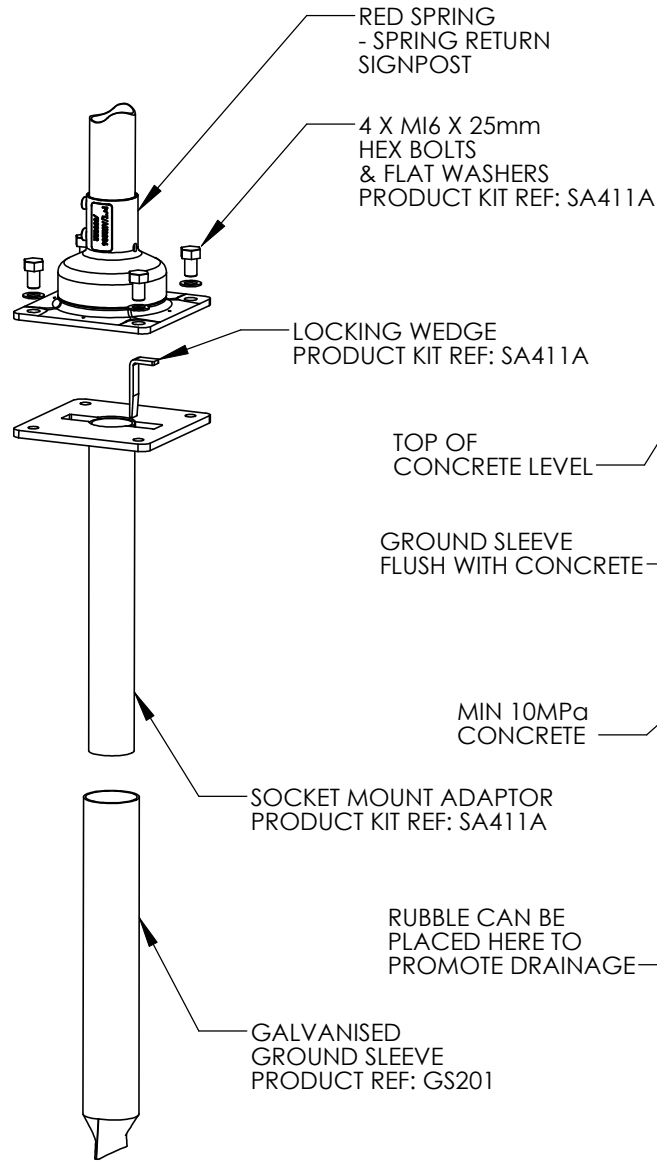
SCALE	NTS	ALL DIMENSIONS IN MILLIMETERS	QUANTITY	1	DO NOT SCALE IF IN DOUBT ASK
CHECKED	ICB	MATERIAL	NA		
LAST UPDATE	29/07/2011	FINISH	NA		
DRAWN	Ian Brodie	DESCRIPTION	TALL SPRING RETURN SIGNPOSTS TECHNICAL INFORMATION SHEET 9 SOCKET MOUNT ADAPTOR - SMART TAPER LOCK INSTALLATION GUIDELINES		
DATE	06/05/2011				

JMB MANUFACTURING PTY LTD		
24 BRIGID BOULEVARD AUSTINE HEIGHTS QLD AUSTRALIA 4300 PH. 07 3814 7882 FAX. 07 3814 7884		
ACAD FILE NAME	Technical Information	SH. 9
Part:		OF 12

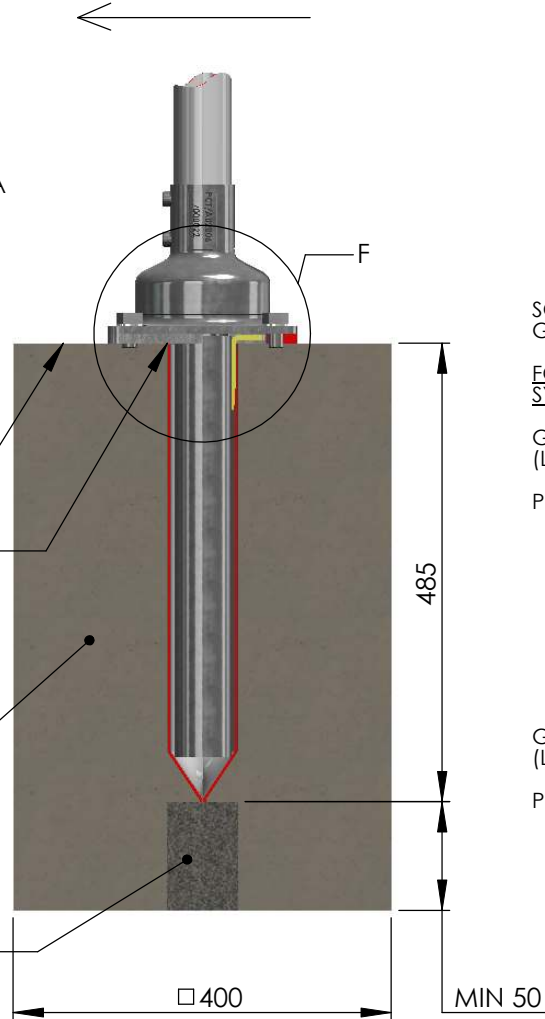
SOCKET MOUNT ADAPTOR KIT - PRODUCT REF: SA411A

CONTAINS:

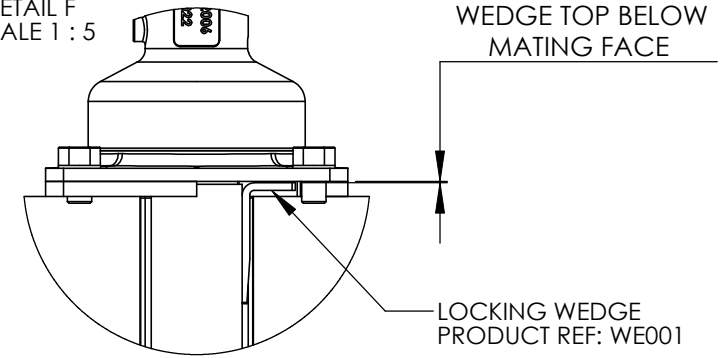
- 4 X M16 x 25 HEX BOLTS (Galv)
- 4 X M16 FLAT WASHERS Galv)
- 1 X SA411 445mm SOCKET MOUNT ADAPTOR
- 1 x WE001 LOCKING WEDGE



PREFERRED POST ORIENTATION FOR DIRECTION OF TRAFFIC



DETAIL F
SCALE 1 : 5



SOCKET MOUNT ADAPTORS CAN BE INSTALLED INTO AN EXISTING CONCRETED GROUND SLEEVE OR NEW CONCRETED GROUND SLEEVE.

FOR NEW INSTALLATION SITES WE RECOMMEND USING THE SMART TAPER LOCK SYSTEM OVER A GROUND SLEEVE. (REFER TECHNICAL INFORMATION SHEET 3)

GUIDELINES FOR INSTALLING INTO AN EXISTING SITE:
(Local regulations should always take precedent over these installation guidelines)

PRODUCT REF : SA411A

1. MEASURE DEPTH OF GROUND SLEEVE
2. CUT SOCKET MOUNT ADAPTOR OFF TO A LENGTH THAT SUITS
3. ORIENTATE AND INSERT THE SOCKET MOUNT ADAPTOR INTO THE GROUND SLEEVE
4. DRIVE IN THE LOCKING WEDGE (WE001) ENSURING THE WEDGE TOP IS BELOW THE TOP OF THE ADAPTOR MATING FACE
5. BOLT THE SPRING RETURN SIGN POST TO THE SOCKET MOUNT ADAPTOR AND TIGHTEN DIAGONALLY

GUIDELINES FOR INSTALLING INTO A NEW SITE:
(Local regulations should always take precedent over these installation guidelines)

PRODUCT REF : WE001 WEDGE, GS201 GROUND SLEEVE, SA411A

1. SET GROUND SLEEVE IN FOOTING
2. PLACE SOME RUBBLE IN CENTRE BASE TO FACILITATE DRAINAGE
3. CONCRETE GROUND SLEEVE IN PLACE USING MIN 10MPa CONCRETE
4. LEAVE TO SET BEFORE FITTING THE SPRING RETURN SIGN POST
5. DO NOT ATTEMPT TO DRIVE THE WEDGE IN PLACE UNTIL CONCRETE HAS COMPLETELY SET
6. REFER TO EXISTING SITE INSTRUCTIONS ABOVE TO INSTALL THE SPRING RETURN SIGN POST

**INFORMATION APPLICABLE TO:
SURFACE MOUNT - SPRING RETURN SIGN POST UNIT
- RED SPRING**

SCALE	NTS
CHECKED	ICB
LAST UPDATE	29/07/2011
DRAWN	Ian Brodie
DATE	06/05/2011

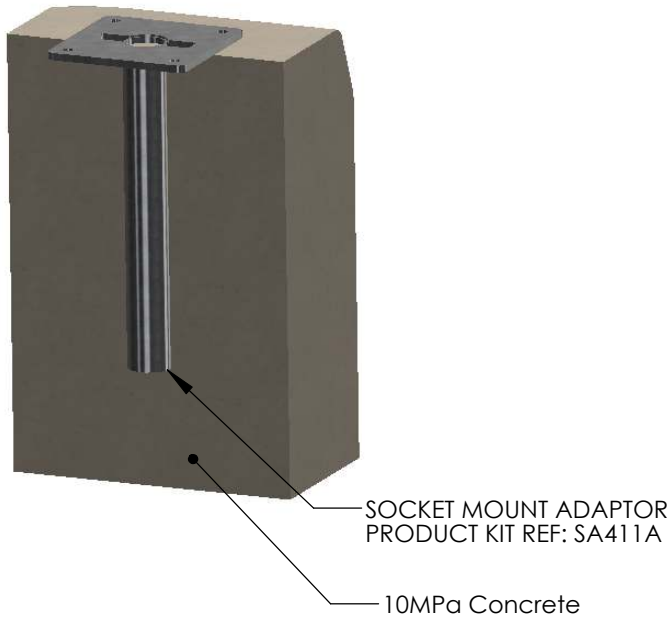
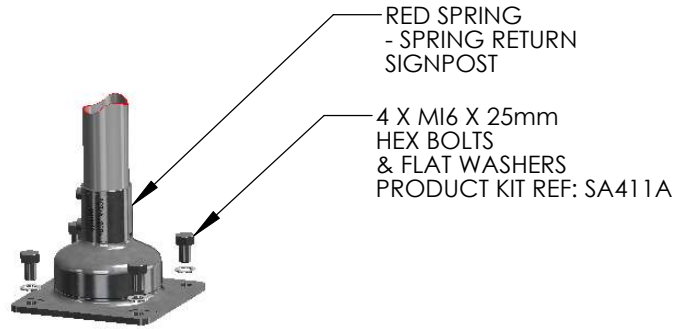
ALL DIMENSIONS IN MILLIMETERS	QUANTITY	1	DO NOT SCALE IF IN DOUBT ASK
MATERIAL	NA		
FINISH	NA		
DESCRIPTION	TALL SPRING RETURN SIGNPOST TECHNICAL INFORMATION SHEET 10 SOCKET MOUNT ADAPTOR - GROUND SLEEVE INSTALLATION GUIDELINES		

JMB MANUFACTURING PTY LTD 24 BRIGID BOULEVARD AUSTINE HEIGHTS QLD AUSTRALIA 4300 PH. 07 3814 7882 FAX. 07 3814 7884		
ACAD FILE NAME	SH. 10	
Technical Information		
Part:	OF 12	

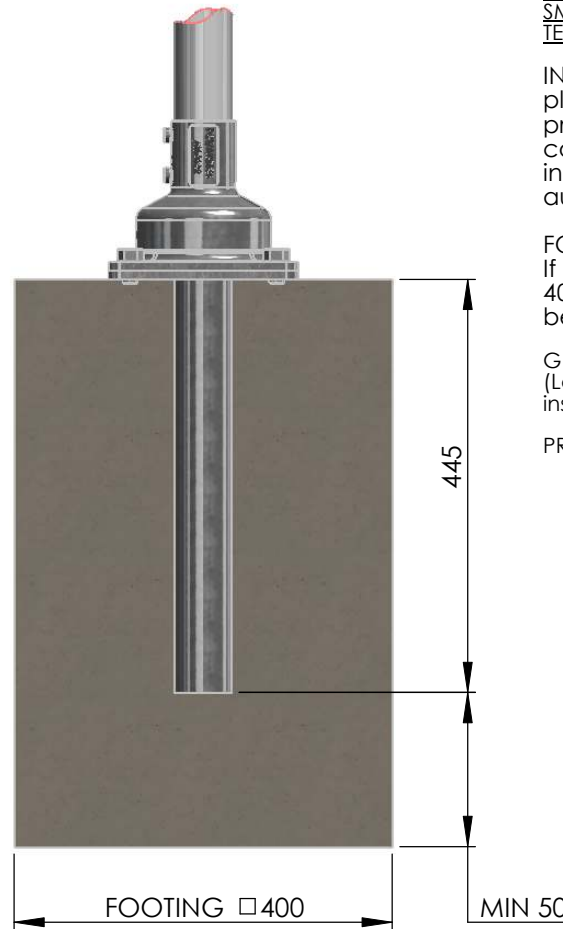
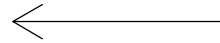
SOCKET MOUNT ADAPTOR KIT - PRODUCT REF: SA411A

CONTAINS:

- 4 X M16 x 25 HEX BOLTS (Galv)
- 4 X M16 FLAT WASHERS Galv)
- 1 X SA411 445mm SOCKET MOUNT ADAPTOR
- 1 x WE001 LOCKING WEDGE (not required for direct cement in)



PREFERREED POST OREINTATION FOR DIRECTION OF TRAFFIC



SOCKET MOUNT ADAPTORS CAN BE INSTALLED DIRECTLY INTO A CONCRETE FOOTING. IF DOING THIS IT IS RECOMMENDED TO FLATTEN THE END OF THE TUBE A SMALL AMOUNT WITH A HAMMER TO INHIBIT ANY CHANCE OF ROTATION

FOR NEW INSTALLATION SITES WE RECOMMEND USING THE SMART TAPER LOCK SYSTEM OVER A GROUND SLEEVE. (REFER TECHNICAL INFORMATION SHEET 3)

INSTALLING SOCKET MOUNT ADAPTOR:
please refer to standard installation specifications produced by road authorities in your region as soil conditions and specifications may be different. This information is intended as a guide and any local authority specifications should will take precedence.

FOOTING:
If installing a new footing we recommend a minimum of 400mm square by 500mm deep. Allow at least 50mm beneath the gorund socket.

GUIDELINES FOR INSTALLING:
(Local regulations should always take precedent over these installation guidelines)

PRODUCT REF : SA411A

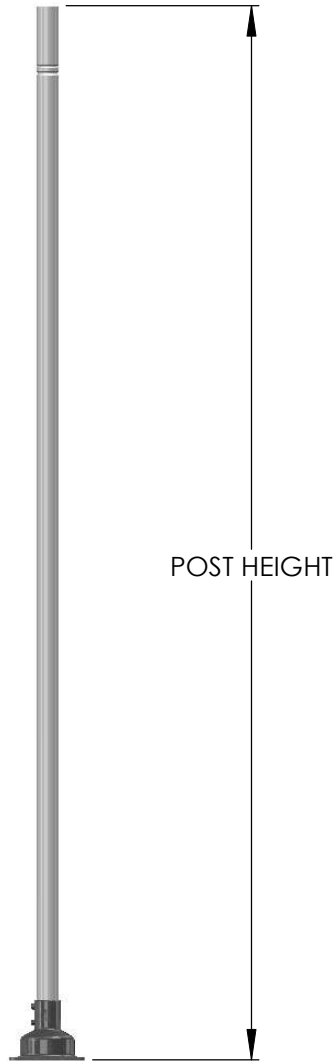
1. ORIENTATE AND SET SOCKET MOUNT ADAPTOR INTO FOOTING
2. CONCRETE ADAPTOR IN PLACE USING MIN 10MPa CONCRETE
3. LEAVE CONCRETE TO SET BEFORE FITTING THE SPRING RETURN SIGN POST
4. BOLT THE SPRING RETURN SIGN POST TO THE SOCKET MOUNT ADAPTOR AND TIGHTEN DIAGONALLY

**INFORMATION APPLICABLE TO:
SURFACE MOUNT - SPRING RETURN SIGN POST UNIT
- RED SPRING**

SCALE	NTS	ALL DIMENSIONS IN MILLIMETERS	QUANTITY	DO NOT SCALE IF IN DOUBT ASK
CHECKED	ICB		MATERIAL	NA
LAST UPDATE	29/07/2011	FINISH	NA	1
DRAWN	Ian Brodie	DESCRIPTION	TALL SPRING RETURN SIGNPOST TECHNICAL INFORMATION SHEET 11 SOCKET MOUNT ADAPTOR - DIRECTLY CONCRETE INTO FOOTING INSTALLATION GUIDELINES	
DATE	06/05/2011			

JMB MANUFACTURING PTY LTD 24 BRIGID BOULEVARD AUSTINE HEIGHTS QLD AUSTRALIA 4300 PH. 07 3814 7882 FAX. 07 3814 7884		
ACAD FILE NAME	SH. 11	
Technical Information	OF 12	
Part:		

STANDARD STEEL POST PICTURED



RED SPRING TABLE NOTES:

- POST HEIGHT RANGE FOR SPRING RETURN SIGN POSTS - BLUE SPRING
- THE POST HEIGHT IN THE TABLE BELOW REFERS TO OVERALL HEIGHT (ie. GROUND LEVEL TO POST). THE ACTUAL PIPE LENGTH REQUIRED TO ACHIEVE A NOMINATED POST HEIGHT IS: PIPE LENGTH = POST HEIGHT - 75mm
- SIGN CARRYING CAPACITY IN THE TABLE BELOW REFERS TO THE MAXIMUM MASS OF SIGNAGE THAT CAN FITTED TO A SPRING RETURN SIGN POST & ALLOW IT TO STILL SELF RECOVER
- TYPICAL SIGN SIZE CAN BE USED AS AN APPROXIMATE SIGN SIZE GUIDE, BASED ON 1.6mm ALUMINIUM PLATE

STEEL POSTS: ϕ 60.3mOD x 2.3mm WALL				
	POST HEIGHT mm	PIPE LENGTH mm	SIGN CARRYING CAPACITY kg	TYPICAL ALUMINIUM SIGN SIZE mm
MAXIMUM POST HEIGHT	2800	2725	1.55	600 h x 600 w
MINIMUM HEIGHT	1700	1625	6	-

FOR CUSTOM APPLICATIONS OR PRODUCT SELECTION ASSISTANCE
SIMPLY CONTACT JMB AND WE WILL HELP FIND A SOLUTION

ALTERNATLEY: TRY THE SIMPLE SPRING RETURN SIGN POST SELECTOR PROGRAM (on
the downloads page) TO HELP SELECT THE CORRECT COLOURED SPRING BASE UNIT
FOR YOUR APPLICATION



FOR STEEL POST LOCKING SCREWS USE
M10 X 12 KNURL OR CUP GRUB SCREWS



FOR PLASTIC POST LOCKING SCREWS USE
M10 X 16 POINT GRUB SCREWS

WARNING: Spring Return Signposts do contain a spring under pressure and should be fitted with A Safe Post. PLEASE REFER TO OUR SAFE POST SAFETY SHEET (download pages) for details on making safe posts.

SCALE	NTS	ALL DIMENSIONS IN MILLIMETERS	QUANTITY	DO NOT SCALE IF IN DOUBT ASK
CHECKED	ICB		MATERIAL	NA
LAST UPDATE	29/07/2011	FINISH	NA	
DRAWN	Ian Brodie	DESCRIPTION	SPRING RETURN SIGNPOSTS TECHNICAL INFORMATION SHEET 12	
DATE	07/05/2011		RED SPRING BASE APPLICABLE POST HEIGHT RANGE	

JMB MANUFACTURING PTY LTD 24 BRIGID BOULEVARD AUSTINE HEIGHTS QLD AUSTRALIA 4300 PH. 07 3814 7882 FAX. 07 3814 7884		
ACAD FILE NAME	SH. 12	
Technical Information	OF 12	
Part:		